

**Clinical evidence:**

- Rheude et al. EuroIntervention 2020
- Secco et al. Cardiovascular Revascularization Medicine 2019
- Secco et al. EuroIntervention 2015



Scan QR-Code  
to access studies

Over 500 OPN NC® patient cases documented in European clinical studies demonstrating safety & performance with planning for additional studies ongoing

**SIS Medical AG**  
Hungerbuelstrasse 12a  
CH-8500 Frauenfeld  
Switzerland  
T +41 (0)52 245 09 90  
F +41 (0)52 245 09 91  
info@sis-medical.com  
www.sis-medical.com

 **SWISS MADE**

Copyright © by SIS Medical AG  
Subject to alteration due to technical advances.  
All rights reserved.  
Products developed and produced by SIS Medical AG.

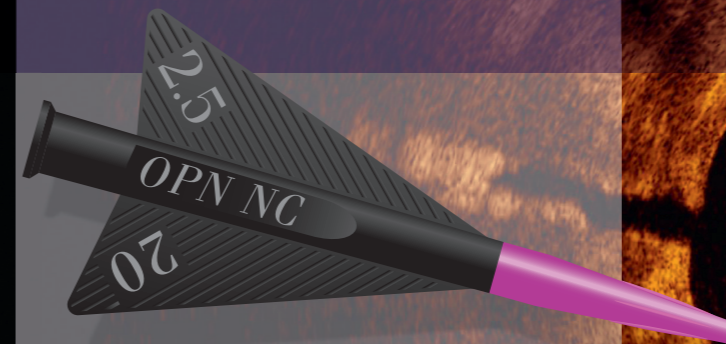
LA002276-001  
04.2022



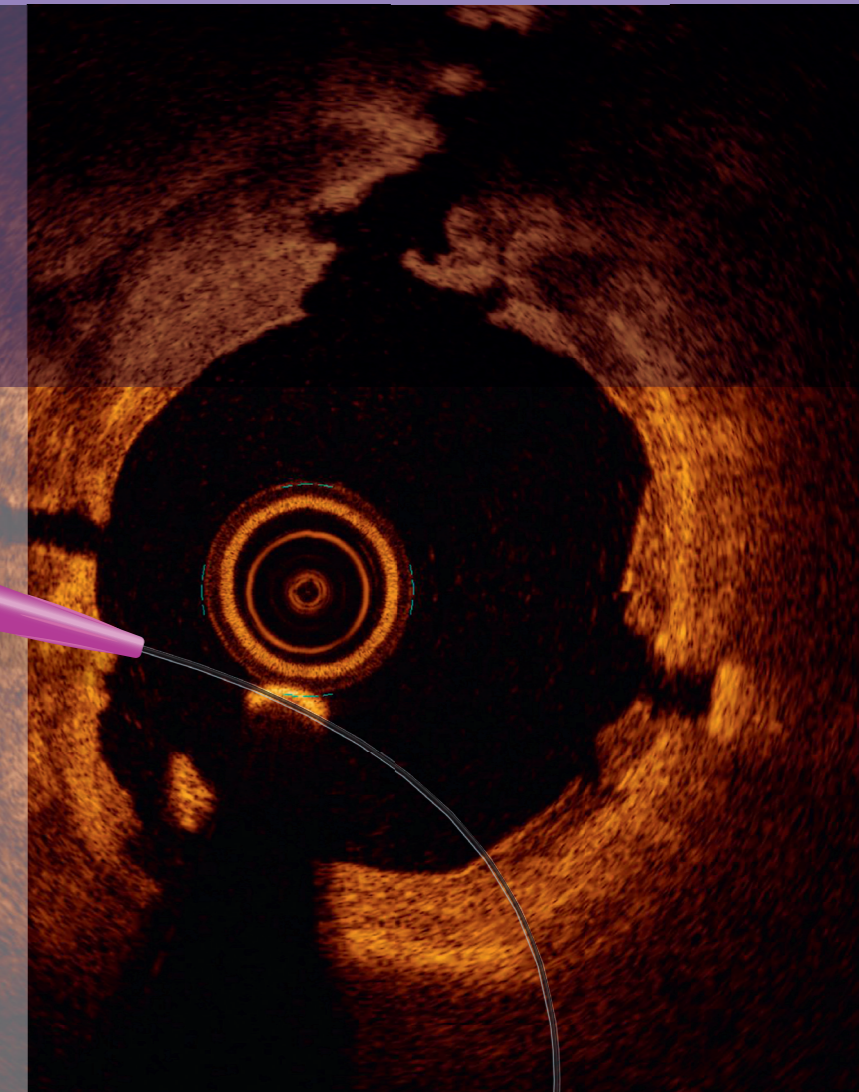
## OPN NC® TWIN-Wall

Super High Pressure PTCA balloon  
The Ace among PTCA balloon catheters!

- Unique TWIN-Wall balloon design
- Rated Burst Pressure (RBP) of 35 atm
- Very Low Compliance



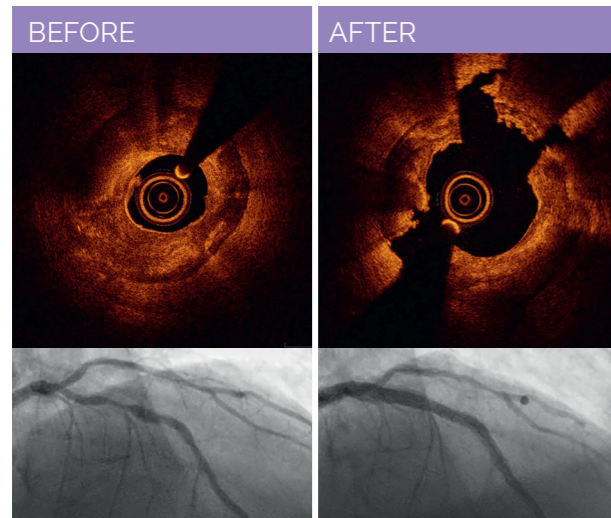
[www.sis-medical.com](http://www.sis-medical.com)





**A Swiss technology that redefines the strategy of lesion preparation**

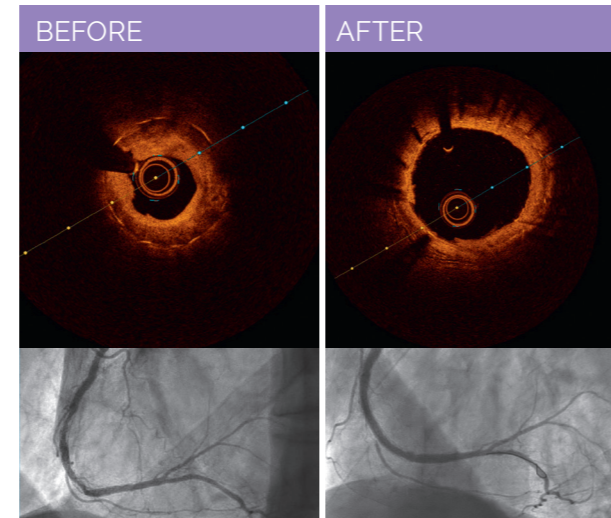
Clinical case I: Lesion preparation with OPN NC® balloon for DES placement under challenging conditions



By courtesy of Florim Cuculi, MD

**OPN NC® is indicated for pre-dilatation & post deployment expansion of balloon expandable coronary stents**

Clinical case II: DES optimization with OPN NC® balloon



# OPN NC® TWIN-Wall

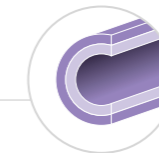
**Super High Pressure PTCA balloon with RBP of 35 atm!**

**OPN NC®**

Offers economical and technical advantages to overcome a great number of your daily interventional challenges

**TWIN-Wall Balloon design**

- Unique balloon-in-balloon technology to withstand very high pressures for effective revascularization of complex lesions
- Providing uniform expansion



**Folding Technology**

- Trifold in all balloon diameters

**Markers**

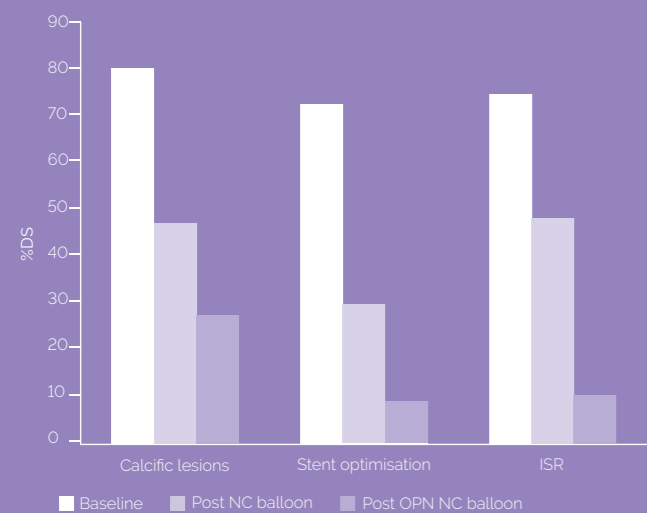
- Dual Pt/Ir markers for all balloon sizes

**Low Lesion Entry Profile**

- Lesion entry profile of OPN NC® is 0.016\* comparable to standard lower RBP dilatation catheters
- Lesion entry profile\* measured at the centre of the tip
- \* Data on file

**Secco et al. EuroIntervention 2015**

Very high pressure dilatation for undilatable coronary lesions: indications and results with a new dedicated balloon

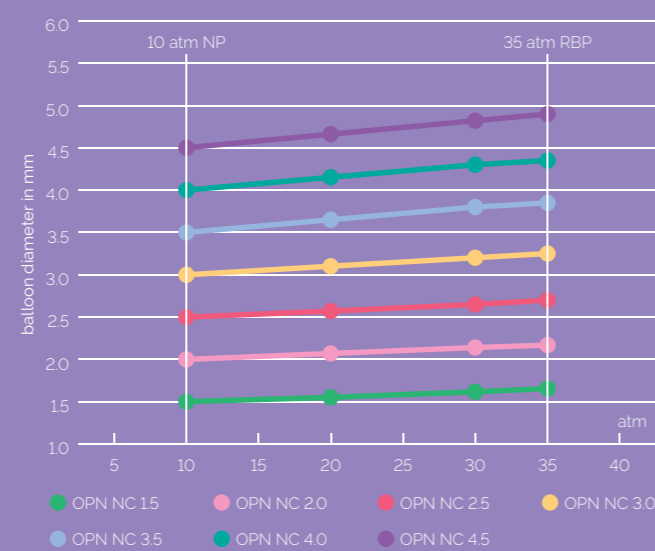


**Conclusion:**

When conventional NC balloons fail, the new OPN NC® dedicated high pressure balloon provides an effective and safe alternative strategy for the dilatation of resistant coronary lesions

**Compliance Curve OPN NC®**

Lowest diameter compliance over the very large pressure range



The OPN NC® device has a flat linear compliance due to its TWIN-Wall balloon design. The OPN NC® device has less than 10% radial growth over nominal diameter even when inflated up to 35 atm

**Ordering Information**

OPN NC®

Article Number	Balloon Diameter	Length	RBP	Min. Guiding	Article Number	Balloon Diameter	Length	RBP	Min. Guiding
150-010-004	1.5 mm	10 mm	35 atm	6F	350-010-004	3.5 mm	10 mm	35 atm	6F
150-015-004	1.5 mm	15 mm	35 atm	6F	350-015-004	3.5 mm	15 mm	35 atm	6F
150-020-004	1.5 mm	20 mm	35 atm	6F	350-020-004	3.5 mm	20 mm	35 atm	6F
200-010-004	2.0 mm	10 mm	35 atm	6F	400-010-004	4.0 mm	10 mm	35 atm	7F
200-015-004	2.0 mm	15 mm	35 atm	6F	400-015-004	4.0 mm	15 mm	35 atm	7F
200-020-004	2.0 mm	20 mm	35 atm	6F	400-020-004	4.0 mm	20 mm	35 atm	7F
250-010-004	2.5 mm	10 mm	35 atm	6F	450-010-004	4.5 mm	10 mm	35 atm	7F
250-015-004	2.5 mm	15 mm	35 atm	6F	450-015-004	4.5 mm	15 mm	35 atm	7F
250-020-004	2.5 mm	20 mm	35 atm	6F	450-020-004	4.5 mm	20 mm	35 atm	7F
300-010-004	3.0 mm	10 mm	35 atm	6F					
300-015-004	3.0 mm	15 mm	35 atm	6F					
300-020-004	3.0 mm	20 mm	35 atm	6F					

**Important Information**

Refer to the Instructions for Use supplied with these devices for indications, contraindications, adverse effects and risks of use, directions for use, warnings and precautions.