

Mammotome® Elite

Tetherless Vacuum-Assisted Biopsy System

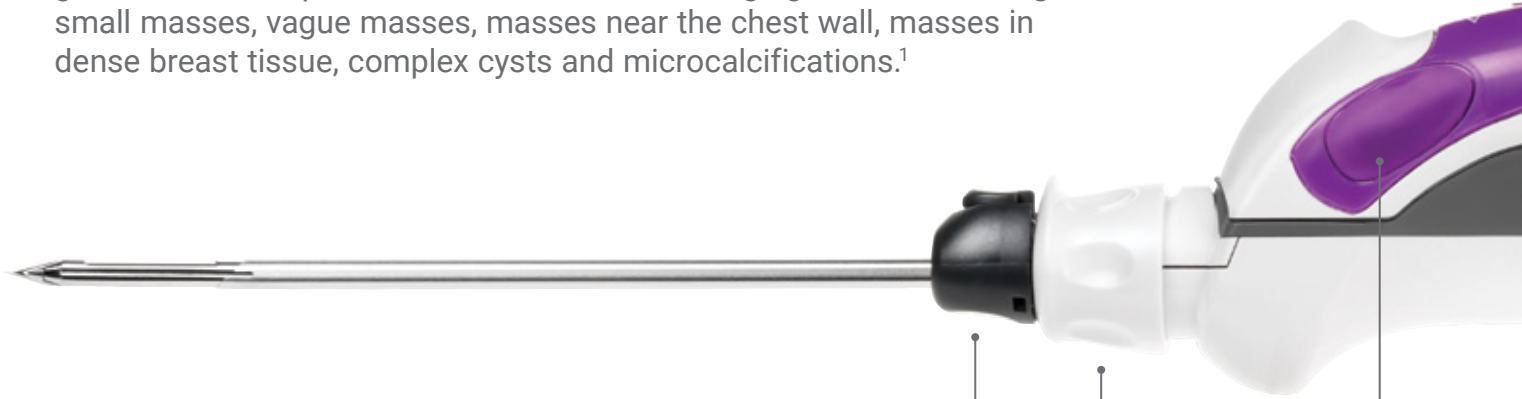


Providing confidence
in challenging procedures

Mammotome® Elite

Tetherless Vacuum-Assisted Biopsy System

The Mammotome® Elite system makes it easier to perform ultrasound-guided breast biopsies on even the most challenging lesions including small masses, vague masses, masses near the chest wall, masses in dense breast tissue, complex cysts and microcalcifications.¹



Coaxial Cannula

Removable coaxial cannula facilitates efficient and accurate placement of tissue markers.



Needle Rotation

360-degree needle rotation allows you to adjust aperture based on position of lesions.



Biopsy Button Selection

Multiple biopsy buttons allow you to use different hand positions during the sampling process, helping to maximize comfort and stability.



Providing confidence in challenging procedures

The vacuum assist, sharp cutting blade, and small size of the Mammotome® Elite system allows for more confidence and accuracy even in challenging clinical settings.

83%

Reduction in Underestimation Rate²

11%

Improvement in Accuracy²





Mammotome[®] Elite

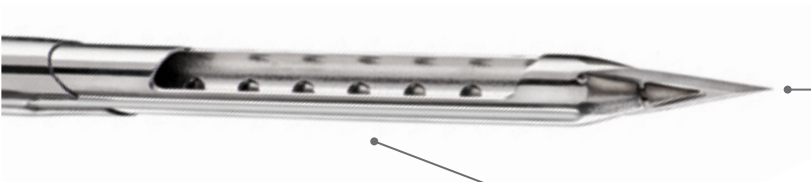
TruVac[™] Technology

Integrated TruVac[™] technology captures and transports large, unfragmented tissue samples from the biopsy site to the collection cup.



Collection System

Quick release design of basket expedites tissue removal process; clear cup provides visualization of tissue; 3-piece system enables touchless transfer of tissue to pathology.



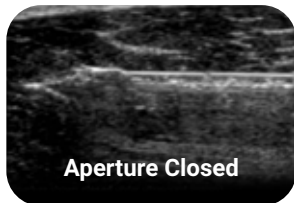
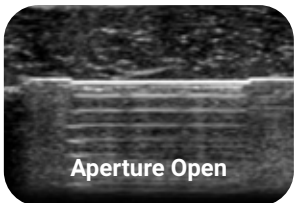
Single Insertion

Bladed insertion tip moves easily through tissue, minimizing time required to navigate to lesions.



Probe Aperture

10G and 13G needle options to accommodate your biopsy needs.



Clear Ultrasound Visibility

Echogenic probe allows for more accurate needle placement.

Introducer Stylet
Compact design and bladed insertion tip maximize control; introducer stylet aligns with probe tip to help ensure proper aperture placement.



Product Information

Code	Description	Qty
MEH1	Mammotome® Elite Holster (includes charger base and power cord)	1
MEP10	10G Mammotome® Elite Ultrasound Probe	5
MEP13	13G Mammotome® Elite Ultrasound Probe	5
MEI10	10G Mammotome® Elite Introducer Stylet	5
MEI13	13G Mammotome® Elite Introducer Stylet	5

Ultrasound Probe



ATTRIBUTE	MEP10	MEP13
Gauge	10G	13G
Needle Length w/o Coaxial Cannula	136mm	136mm
Needle Length w/ Coaxial Cannula	122mm	122mm

Coaxial Cannula



ATTRIBUTE	MEP10	MEP13
Gauge	9G	12G
Length	91.6mm	94.1mm

Introducer Stylet



ATTRIBUTE	MEI10	MEI13
Gauge	10G	13G
Needle Length	136mm	136mm

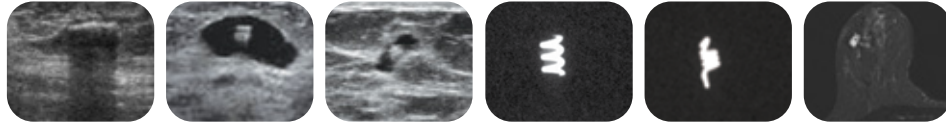
Mammotome® Markers: Our Complete Ultrasound Solution

HydroMARK™

Breast Biopsy Site Marker



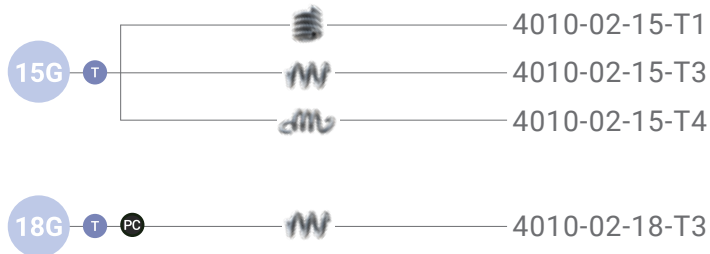
Enduring exclusive hydrogel technology provides long-term ultrasound visibility in percutaneous breast biopsy procedures.



GAUGE

SHAPE

CODE

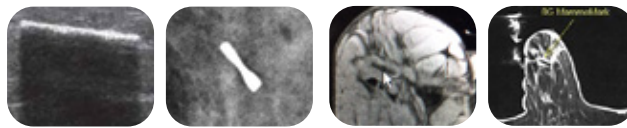


CorMARK®

Biopsy Site Identifier



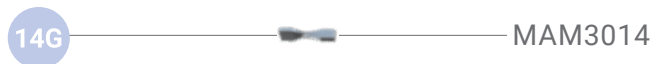
Precise rapid collagen expansion for unsurpassed placement accuracy.³



GAUGE

SHAPE

CODE

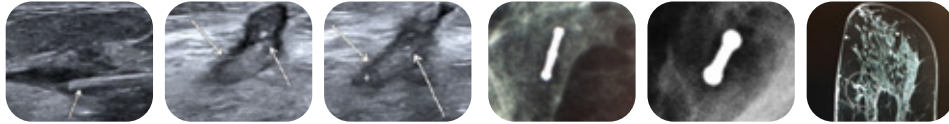


MammoSTAR®

Biopsy Site Marker



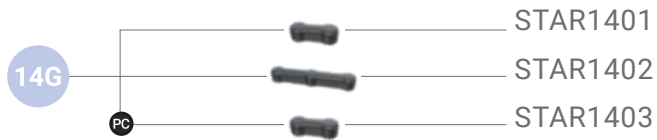
Natural non-metal marking alternative with a long-lasting beta glucan carrier plug for unique patient sensitivities.



GAUGE

SHAPE

CODE



*Markers are sold separately

Order Placement



Contact your Customer Service Representative at **+49 (0) 4106 978 9300**. Shipping details and an order confirmation number will be provided to you upon completion of your order.



Send your order via fax to your Customer Service Representative at **+49 (0) 40-500 98 940**.



Send your order via email to your Customer Service Representative at **info-europe@mammotome.com**.

Mammotome
mammotome.com

1. Based on clinical study, La Forgia, et al. (2020) and clinical case studies found on <https://www.mammotome.com/product-support/mammotome-elite-support/>
2. Data comparing the 13G Mammotome® Elite system to a 14G core needle device
3. MammoMARK™ Device Test - PRC043442 Rev B, pgs. 2, 5-6: Collagen Expansion

Devicor Medical Europe GmbH

Carl-Zeiss-Straße 9 | 25451 Quickborn (Germany)

Phone: +49 (0) 4106 978 9300 | **Customer Service:** 0800 500 98 98

Email: info-europe@mammotome.com

Commercial Register: 15448 KI | District court: Kiel | Tax number: 18/297/28192 | VAT-ID: DE202370516

For complete product details, see Instructions for Use.

Product may not be approved or available in your region. Please check with your local Mammotome representative.